

ALZAMIL PROFILE COMPANY

2024

ABOUT US

AlZamil Company for Industry, Trade, and Transport is one of leading companies in the Kingdom of Saudi Arabia, specializing in insulation solutions, water solutions, and energy and electrical our company has been dedicated ,1985 solutions. Established in to reinforcing excellence and industry reliability from the outset. Our unwavering commitment to quality, innovation, and sustainability, in accordance with the highest standards, has played a pivotal role in delivering exceptional outcomes within our sphere of expertise.

The image shows an industrial facility with several large, cylindrical metal storage tanks in the background. In the foreground, there are numerous stacks of white, plastic containers, likely used for storing liquids or gases. The scene is set outdoors on a paved area. The text 'OUR HISTORY' is overlaid in the center in a bold, yellow font.

OUR HISTORY



company established

1985



Started Water tanks manufacturing

1997



doors manufacturing

2000



manhole covers manufacturing

2013



launching Tanks using blow Molding

2017



Polymar factory established

2020



started Heavy duty MC Manufacturing

2022



Started Water filters. lines manufacturing

2023



Started Water heater manufacturing

2024

Our History

- **In 1985**, AlZamil Company for Industry, Trade, and Transport was established as a building materials trading company. Since then, AlZamil Company has primarily specialized in steel, cement, waterproofing, and thermal insulation. With a forward-thinking vision, the company has evolved over the years and expanded into various fields as part of a five-decade plan and a strategy to keep pace with the country's trends and meet the requirements of the local and Gulf markets.
- **In 1997**, AlZamil Company began manufacturing its own products and established its factories. As a result of these developments, AlZamil Company has become the largest leading manufacturer of water tanks in the Kingdom of Saudi Arabia.
- **In 2000**, we established our factory for manufacturing automatic doors to keep up with advancements and achieve our strategic vision. Through continuous development, we have reached the highest level of quality while ensuring our ability to keep up with the market.
- **In 2013**, AlZamil Company started manufacturing floor opening covers, engineered from specially designed components to meet the highest standards of durability and quality. Through several stages of development, we have attained the forefront position in the classification of this product.

- **In 2017,** the world's largest factory for manufacturing polyethylene tanks using blow molding technology was established. We strive strongly because we know that this new investment will contribute to enhancing our manufacturing capabilities and meeting the needs of the local and export markets.
- **In 2020,** a second factory was established for polymer production, specializing in raw materials. This new addition is a realization of our aspirations and a clear improvement in delivering our products.
- **In 2023,** AlZamil Company began manufacturing high-capacity water filters that effectively remove harmful substances. This step represents a continuation of the outlined steps for the company, which delivers its products according to a clear vision and strategy.
- **In 2024,** In 2024, we began manufacturing central water heaters as part of our strategy to expand our solutions and product offerings across multiple sectors





Our fields

Our fields



Insulation
solutions



Water
solutions



Infrastructure
solutions



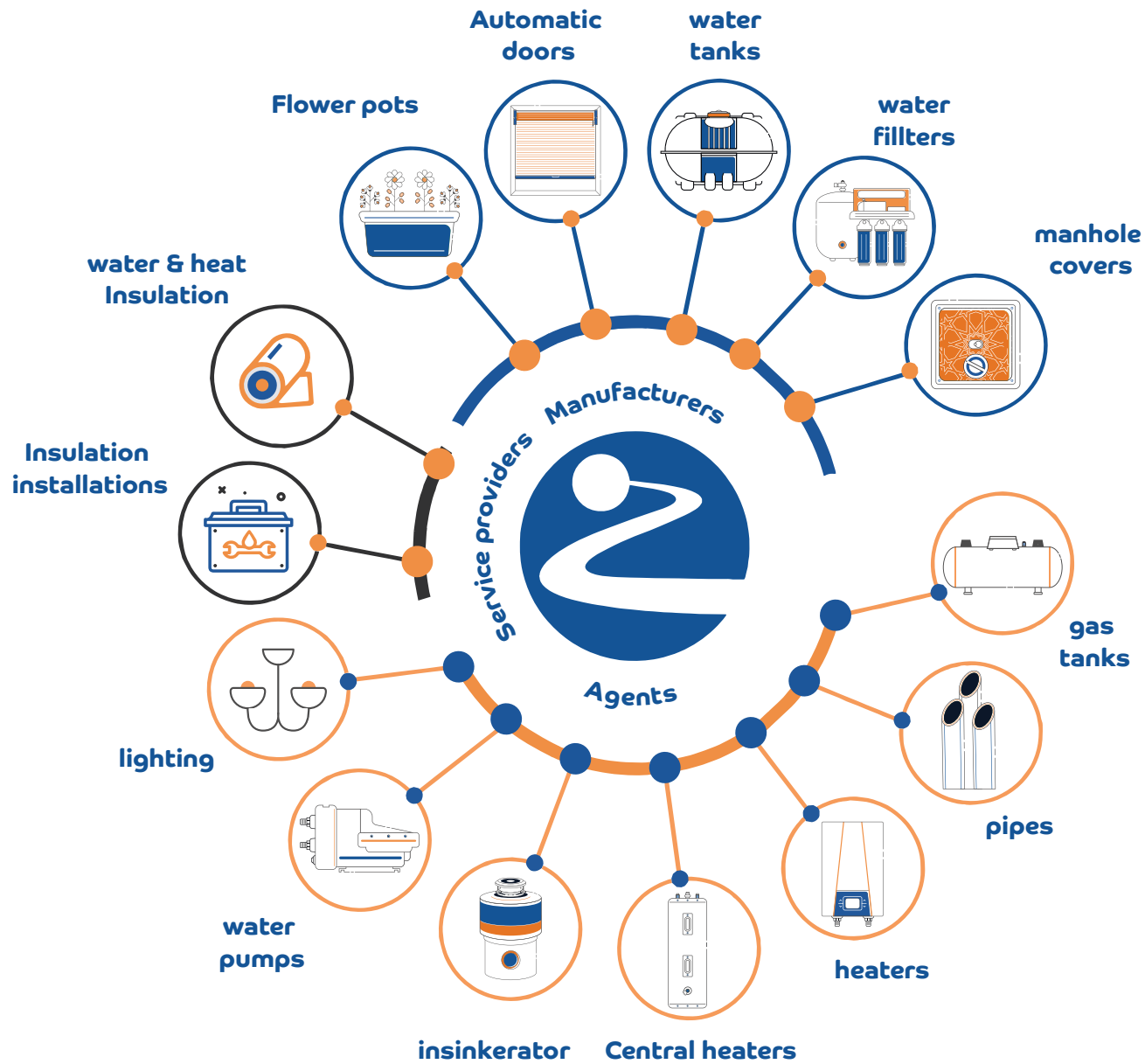
Energy electricity
& solutions



Gas
solutions



Safety
solutions



Insulation Solutions

We provide advanced insulation solutions used to protect buildings and facilities from environmental factors, whether thermal or water-related. Our products include water and thermal insulation materials designed to the highest quality standards. These solutions are distinguished by their effectiveness in conserving energy and reducing operating costs, making them an ideal choice for residential and industrial projects.

A construction site showing workers installing insulation. In the foreground, a worker in a blue jacket and white cap is rolling a large roll of white insulation. Another worker in a blue and white striped vest stands nearby. In the background, several other workers in high-visibility vests are working on a flat roof surface. The entire image has a blue color overlay.

**water & heat
insulation**

water & heat insulation

These tanks are treated with a material that protects them from physical and chemical factors after burial. They are equipped with anti-rust coating.

Similar to above-ground tanks, underground gas tanks can hold a large quantity of gas, ensuring convenience for the user. Refilling is typically done annually or more frequently based on the tank size and consumption rate.

Insulation Services:

- Waterproofing by Bituminous membrane.
- Waterproofing by cementitious materials.
- Water and Thermal insulation using Polyurethane
- Waterproofing by Acrylic coats and black PU coats.
- Waterproofing by EPDM material.
- Waterproofing by PVC material.
- Thermal insulation by Extruded Polystyrene boards.



Applying insulation above the tiles 'renovation cases'!

Water Solutions

We offer integrated solutions for water management, storage, and purification. This includes water tanks made using polyethylene blow molding technology, which provide the highest levels of hygiene and durability. Additionally, we supply advanced water filters that remove impurities and harmful substances with high efficiency. We are committed to ensuring that all our products meet both Saudi and international quality standards, with long-term warranties.

Water Tanks



Polyethylene Tanks

Polyethylene Tanks are manufactured at Al Zamil industry, Trade and Transport Company's ISO 9001:2015 certified Plant. We produce tanks with the highest quality standards to be the first tanks that got the Performance Sign that meets the Saudi Specifications SASO and British WRAS Certificate to suit various applications for water storage.



Underground Tanks

It consists of independent units with a capacity of 5,000 liters each unit. When they are assembled, they form a giant capacity exceeding **100,000 liters**.

- The unique and effective design of this type of tanks ensures that there will be no liquid leakage in the future.
- The units can be transferred to the installation site directly from the factory, and the company's specialized technical team will assemble and install them at the site.
- It is suitable for storing most types of liquids such as water or most chemical substances as requested by the client.



A photograph of a person's hands filling a clear glass with water from a modern, curved faucet in a white sink. The background is a brick wall. The entire image has a blue color overlay. The text "Mechanical and electrical floats" is centered in the image in a bold, yellow font.

**Mechanical and
electrical floats**

Water Float

It is installed inside the ground tank to control the entry of water into the tank

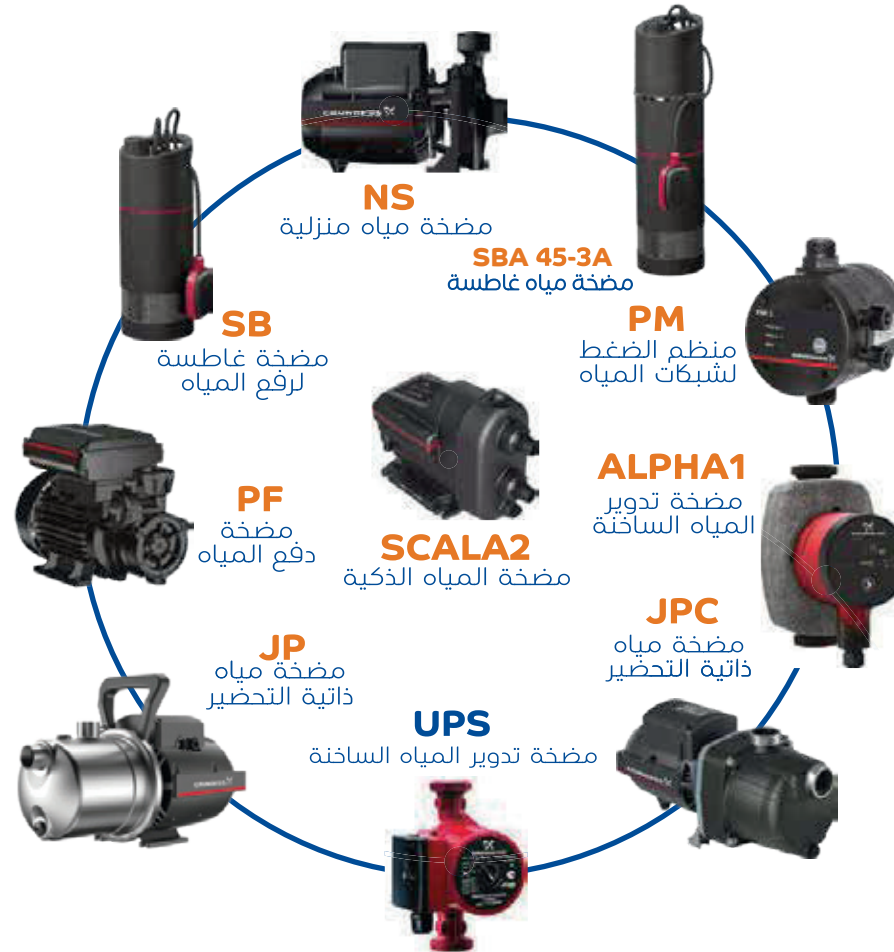


Water Pump



water pump

We provide integrated solutions for water pumps in various sectors, such as water and sanitation, commercial, and company an authorized distributor for Grundfos, the world's leading pump manufacturer company.



GRUNDFOS

**AUTHORISED
DISTRIBUTOR**

water pump



Submersible pump
for wastewater
Zetalia RD 100 one hp



Submersible pump
for wastewater
Zetalia RD 150 one
and a half
horsepower

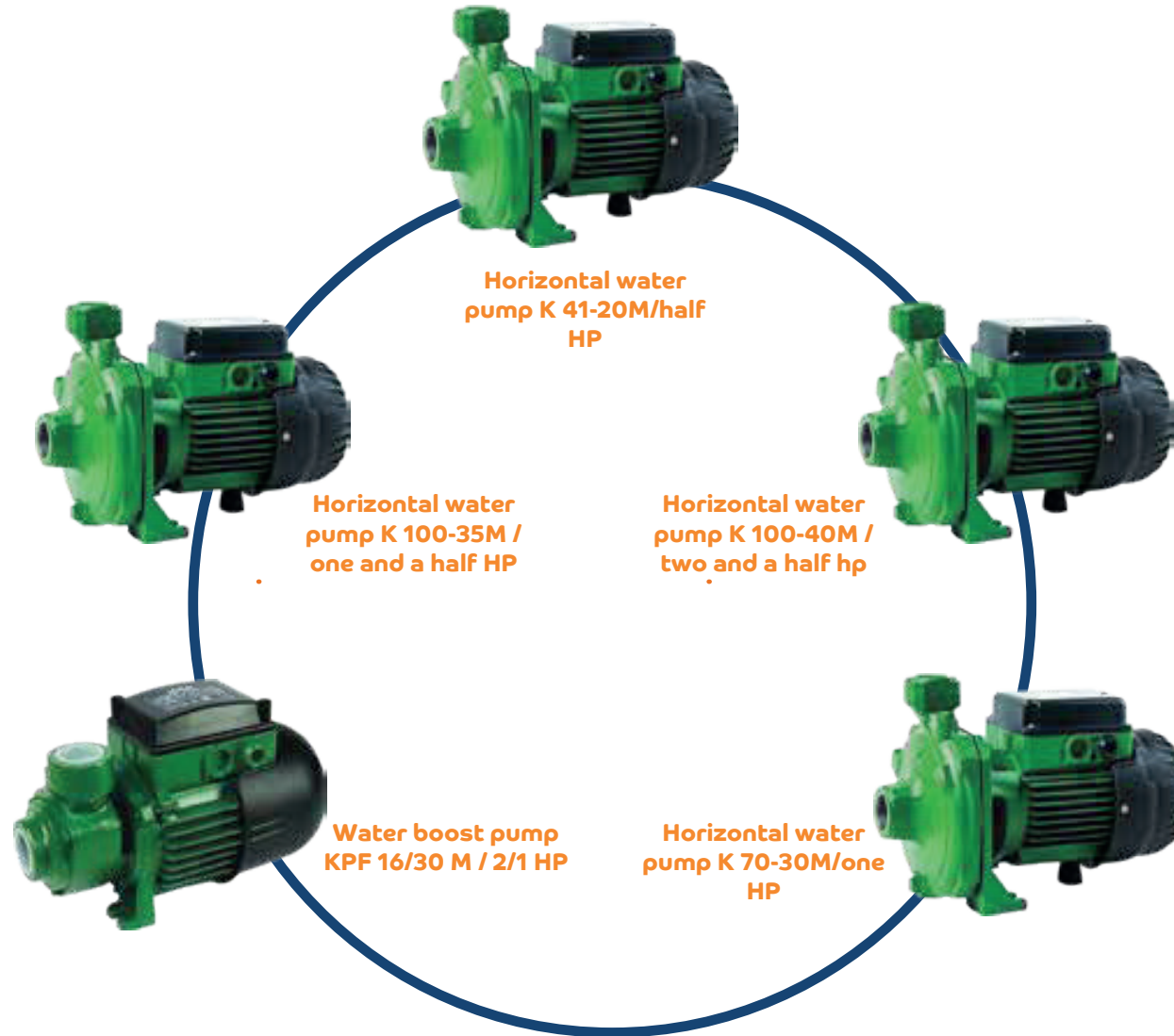


Zetalia CT 120 one
and a quarter
horsepower
submersible water
pump



Submersible pump
for wastewater
Zetalia RD 100 one
hp

water pump



Water Pump

TAIFU[®]
Energy Saving Pump



Taifu Pump - 1 HP



Taifu Pump - .5 HP



Taifu Pump - .5 HP



Taifu Pump - 2 HP



Taifu Pump -.34 HP



Taifu Pump - 1 HP



Taifu Pump -.5 HP



**Water desalination
and purification solutions**

Filters



Aquatower Purification Filter

Works on water purification using the reverse osmosis (RO) system.

Aquatower Water Purification filter is distinguished by its ability to remove all sediments, impurities, dust, and harmful chemicals that result from connections and ground installations.

It also removes chlorine and adjusts the amount of dissolved salts in accordance with the standards of the World Health Organization, while preserving the beneficial elements needed by the body.

It is also characterized by its high ability to remove 98% of dissolved salts in water, 99% of organic materials, viruses, bacteria, and sodium.

The filter is rust-resistant as it is made of Polypropylene (PP) Food Grade material with an elegant design and excellent distribution for the stages inside the filter.



Filters

puricom

From the Taiwanese company Puricom, the world leader in providing products with multiple solutions and home water purification with a reverse osmosis system.

 **Puricom**[®]



Water dispenser

KorHome
by KAROFI.




Aqua-Tower



A modern bathroom scene with a blue tint. On the left, a white vanity with a round mirror and a sink. In the center, a white freestanding bathtub. On the right, a shower area with a wooden slat wall, a showerhead, and a black instant water heater unit. The text 'Central/ instant water heaters' is overlaid in the center in a bold, yellow font.

Central/ instant water heaters

Dafiom Heater



Dafiom water heater is the result of years of research and development by Zamil in the field of heaters. We present to you a heater proudly bearing the name of the Kingdom, and stamped "Made in Saudi Arabia."

Unmatched efficiency... exclusive design and a Zamil warranty by experienced professionals



Product Dimensions		Outlets	Electrical Power (Watt)	Capacity (Liters)	Product Name
الأرتفاع	القطر	4	4200	210	55Dafiom
127	72				
180	72	5	5700	320	85Dafiom
180	77	6	5700	420	120Dafiom



Central water heater

● Efficiency:

High energy saving factor ($E_f = 0,95$ 0,85).
Tank perfectly insulated to reduce heat loss and save energy.

High-power heating plugs made from the best materials for fast heating and to extend the life of the heater.

● Other Benefits:

The heater is also equipped with the exclusive EVERKLEEN system for RUUD products only, set for self-cleaning to prevent sediments caused by poor water quality that adversely affect the efficiency and performance of the heater.

● Performance

Fast heating and high heating capacity between 42 and 99 gallons per hour.

Highly efficient tank protection system as the inner surface is covered with exclusive "RuddGlass" and ultra-rust resistant.

ASME (safety specifications) internationally certified Pressure and temperature regulating valve.

Exclusive high-quality R-Foam Heater insulation material to reduce heat loss and give strength and rigidity to the outer body of the heater.

The heater is equipped with a magnesium column (anode) to fully protect the tank from inside and all its accessories from rust and prolong the life of the heater.



Instant water heater

"CLAGE," manufactured in Germany, which is known for its compact size and easy installation, allowing it to heat water within three seconds with consistent pressure and high energy efficiency, helping to reduce waste using modern water heating technology.



Operating cost reduction.
Energy and water savings.



Space-saving.
Compact dimensions.



Water savings
No need to add cold water.



Increased cleanliness.
Due to shorter water lines.



Instant hot water.
Immediate availability
without waiting.



ideal temperature.
Adjustable in the
water heater.



Short hot water paths.
With minimal water waste.



Environmentally friendly.
Reduced water usage
Lower energy consumption

Instant water heater



Electric instant water heaters are the future (introducing future technology to you intelligently). Instant water heaters are the intelligent solution everywhere now, as they are characterized by high efficiency and offer unique solutions for private homes, residential units, commercial and industrial buildings, as well as public facilities. They conserve water and energy, while providing convenience and simplicity in operation and installation.





PPR pipes and connections

PPR Pipes



BQ PPR pipes and Fittings are manufactured in BQ plants in Germany. This company provides a wide range of high-quality polypropylene thermal pipes and fittings that are suitable for hot and cold drinking water, and for air conditioning systems as well

● PPR Pipes:

These pipes are used to carry hot and cold water indoors and can withstand a water pressure PP-RCT Pipes

● UV Pipes

The pipes are UV insulated with ultraviolet Resistance and are



● Anti-Bacterial B-Clean Pipes

The inner layer in this type of pipes prevents the growth of bacteria

Obtained the highest test certificates



A kitchen sink with a food waste disposer installed, overlaid with a blue semi-transparent filter. The text "Food waste Disposer" is centered in the image in a bold, orange font.

Food waste Disposer

Food waste Disposer

Provided by the American world's leading company in waste management Insinkerator with 78.6 globally market share. The company processes a range of domestic and commercial waste disposers that is compatible with a variety of household and industrial compositions.



Evolution 56



Evolution 66



Evolution 100

Gas Solutions

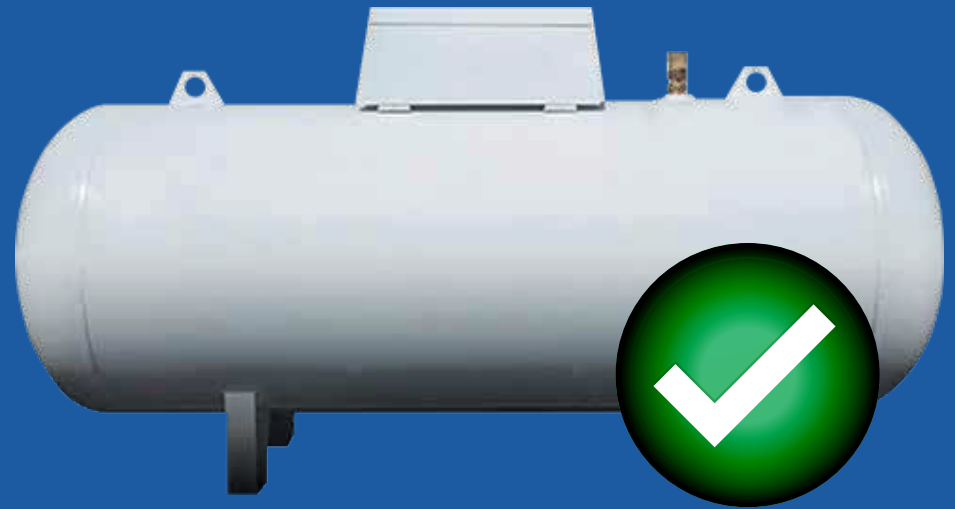
We provide integrated systems for gas storage and delivery with the highest levels of safety and efficiency. Our products range from residential to commercial gas tanks, available in different capacities, along with free delivery and installation services. We also ensure strict compliance with safety standards and locally approved technical requirements, making us a trusted choice for individuals and projects.

A photograph of four white LPG tanks of varying sizes in an industrial yard. The tanks are arranged in a row, with the largest one on the right and the smallest on the left. In the background, there is a large white industrial building with several doors, and two tall metal towers on the left. The entire image is overlaid with a semi-transparent blue filter. The text "LPG TANKS" is written in a bold, yellow, sans-serif font across the center of the image.

LPG TANKS

Above-Ground Gas Tanks:

Designed to store liquefied petroleum gas according to specific specifications, these tanks are used to efficiently manage fuel inventory. They are used for various purposes in factories, homes, and other locations that require easy and fast gas supply. These tanks are filled up to 80% of their capacity and can hold a large quantity of gas, ensuring convenience for the user. Refilling is typically done annually or more frequently based on the tank size and consumption rate.



Designed to store liquefied petroleum gas according to specific specifications, these tanks are used to efficiently manage fuel inventory

Underground Gas Tanks:

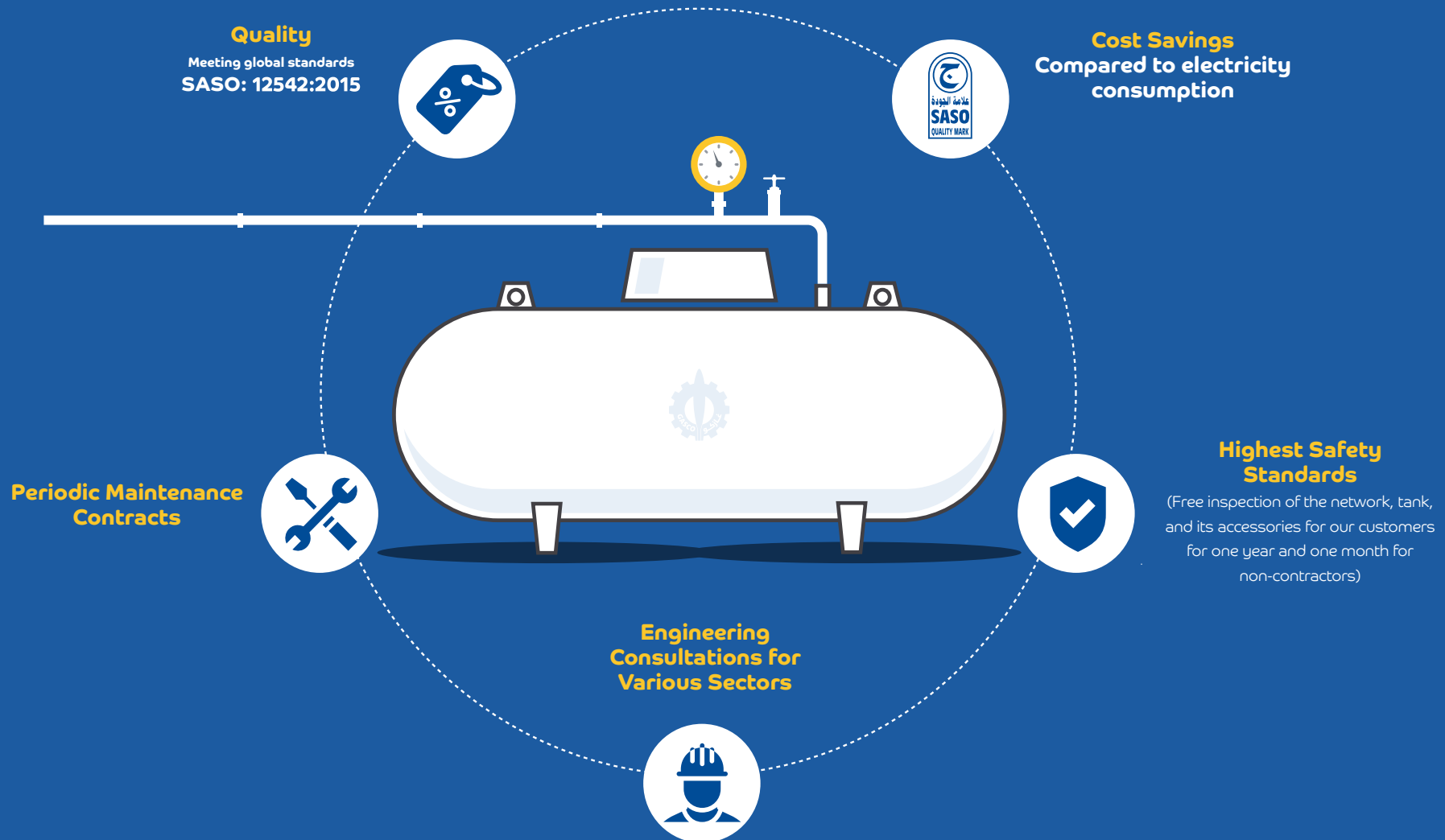
These tanks are treated with a material that protects them from physical and chemical factors after burial. They are equipped with anti-rust coating. Similar to above-ground tanks, underground gas tanks can hold a large quantity of gas, ensuring convenience for the user. Refilling is typically done annually or more frequently based on the tank size and consumption rate.



Designed to store liquefied petroleum gas according to specific specifications, these tanks are used to efficiently manage fuel inventory

According to Saudi and international standards

ASTM A106 Gr. B-ASTM A53Gr. B - API 5L



Lighting Solutions

We strive to provide smart and sustainable solutions in the field of energy and lighting. This includes integrated, high-efficiency lighting systems designed to meet the needs of residential, commercial, and industrial spaces. We also work on developing energy-efficient lighting technologies that support modern environmental trends.



Alzamil lighting

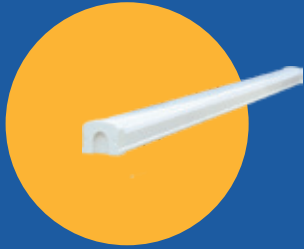
Alzamil lighting

AlZamil Lighting specializes in providing the latest technologies and advanced solutions in the field of lighting with high quality and attractive design.

With innovative designs and the use of high-quality materials, AlZamil Lighting's team has successfully executed projects and delivered effective solutions that help achieve client objectives.



Outdoor lighting



Parking Lights



sport lighting



facade lighting



industrial lights



inground lights



street lights



flood lights



garden lights

Indoor lighting



frames



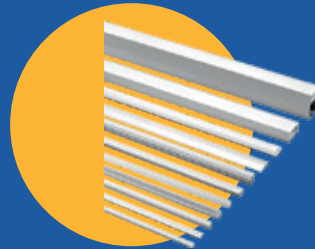
pendant



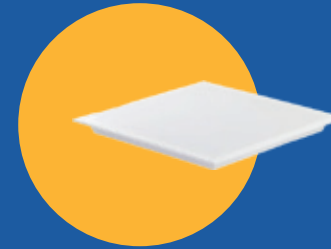
Decorative lighting



bulbs



Aluminum profiles

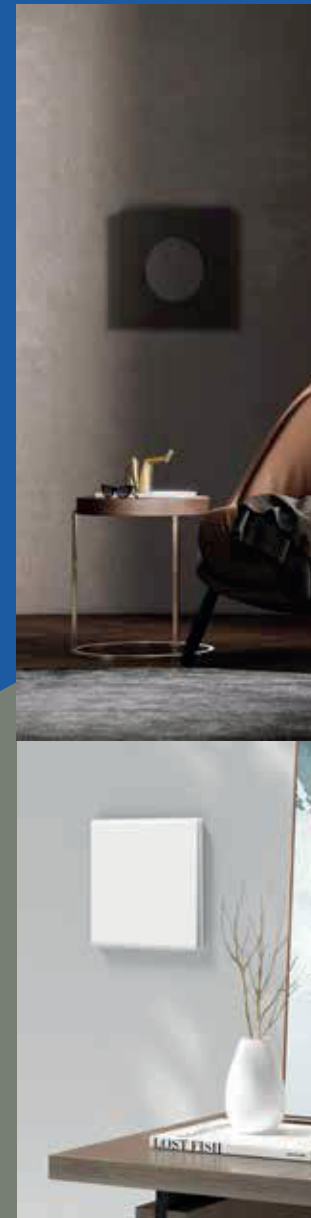


office lighting

Switches and Sockets

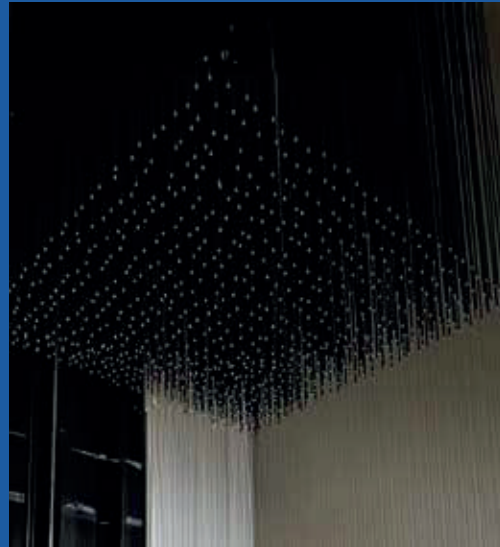
Al-Zamil offers a wide range of switches and sockets that are known for their durability and high quality. They are made using fire-resistant plastic and copper to ensure a lifespan of 25 years without the need for replacement.

- High capacity up to 16 amps.
- 40,000 operations of on/off switching.
- High-capacity gauge of 16 amps for high-power electrical devices.
- year replacement warranty.
- Sleek and slim piano design with a thickness of 3,6 mm and no edges, providing a comfortable touch.



Custom lighting

we at zamil lights design supply and install lighting for any design required



Security Solutions

We strive to provide smart and sustainable solutions in the field of energy and lighting. This includes integrated, high-efficiency lighting systems designed to meet the needs of residential, commercial, and industrial spaces. We also work on developing energy-efficient lighting technologies that support modern environmental trends.



Automatic doors

Automatic doors

Al Zamil Automatic Doors manufactures and supplies safe and high-quality doors under the supervision of a group of teams of engineers and technicians experienced in manufacturing, installation and maintenance. Through cooperation with the top worldwide companies such as SOMFY, Alzamil provides integrated solutions for residential and commercial use of entrance doors.



- Rolling doors
- American doors
- Exterior window shutter
- Commercial doors shutter
- Sliding Gates
- Swinging gates
- Barriers
- Videophone
- Residential protection systems
- Surveillance Cameras

Flower Pots

A photograph of several large, dark-colored flower pots containing green plants, arranged in a row against a brick wall. The image is overlaid with a semi-transparent blue filter. The pots are cylindrical and appear to be made of a dark material like metal or plastic. The plants are dense and green. The background is a brick wall with a window visible on the right side. The overall scene is outdoors, possibly on a balcony or patio.

flower pots



S

AlZamil Flower Pots are made from polyethylene material which is highly durable, lightweight, easy to handle and move from one place to another. They are ideal to grow plants and flowers. They are the most preferred planters in houses, showrooms, shopping malls, hotels, parks and other public places. They add an amazing look and exceptional gesture of the space. AlZamil flower pots are available in six different sizes and designs.

Advantages:

- Decorative - AlZamil Flower Pots add amazing look and exceptional gesture of the space. They are available in six different sizes and designs and in any color which can be customized depending on the requirement.
- Durable and free from rot - raw material is UV-stabilized which is excellent for outdoor use and can withstand to the adverse effect of sunlight and weathering. It does not absorb water, hence it does not rot nor degrade.
- Versatile - it is versatile in nature, it can be used for - numerous purpose and places. It can be used in both outdoor and indoor applications without bothering about its quality. Due to its light weight, it can be easily moved from one place to another.
- Stackable - Due to their special design and structure, they can be piled up and arranged to save space for storage or transport.

Infrastructure Solutions

We contribute to the development of infrastructure through specialized products such as manhole covers, flooring openings, and drainage and connection systems. These products are distinguished by their ability to withstand harsh conditions and their suitability for meeting the needs of major projects in cities and vital facilities, while adhering to precise engineering standards.

A blue-tinted photograph of a city skyline. In the foreground, there is a road and a concrete curb. Behind the curb, there are several palm trees and other greenery. In the background, there are several tall buildings, including a prominent one with a unique, angular design. The sky is a clear, light blue. The text "Manhole Covers" is overlaid in the center in a bold, yellow font.

Manhole Covers

Manhole Covers

Manhole covers are manufactured using Composite Materials (BMC) in Al Zamil plants. They are used to cover underground storage tanks, cesspits, and electrical and telecommunication rooms.

This type of covers is characterized by light weight and high tolerance in comparison to the other types of covers, such as aluminium and iron cast covers. We also provide covers with different colors and decorations to fulfil the customer requirements.



Resistance to deformation and strength



Resistance temperature inversion



Resistance to corrosion



Lightness and handiness



Theft prevention



Electric insulation



Customization



Noise reduction



what sets us apart



Customized Project Solutions

We excel in providing tailor-made solutions for diverse projects to meet their specific requirements.



Sustainability

We acknowledge the importance of environmental responsibility and sustainability.



Research and Development

We believe in the significance of research and development in advanced technologies and studies to improve our efficiency and increase productivity.



Specialized Engineering Team

We recognize the value of having a specialized workforce encompassing diverse expertise and skills. By emphasizing their training,

Comprehensive Support



Technical Studies



Manufacturing



Assembly



Supply



Installation



Testing and
Commissioning



After Sales
Services

Comprehensive coverage



+300
Distributors



+30
Showrooms



+400
fleet



Our partner



Eastern Region Municipality



Jeddah Municipality



Alriyadh Municipality



King Abdulaziz Port -- Dammam



Ministry of Health



Ministry of National Guard



Ministry of Defense and Air Force



Ministry of Interior



Saudi Post



The Red Sea Development Company



Saudi Electricity Company



Saudi Aramco



Ministry of Housing



Ministry of Tourism



Ministry of Environment Water & Agriculture



Ministry of Education



alinma bank



King Abdulaziz Port -- Dammam



Saudi Telecom Company - STC



Riyadh Airports



Saudi Standards, Metrology and Quality Org. --- SASO



General Entertainment Authority



Ministry of Justice



Ministry of Labor and Social Development



Arabian Oud



Ministry of Municipal Rural Affairs & Housing



NEOM



Magrabi Optical



Eastern Region Municipality



Jeddah Municipality



Royal Commission for Jubail&Yanbu



Saptco

Al Zamil... Your Smart Choice for an Easier Life

We offer you integrated, high-quality solutions across a wide range of sectors backed by years of experience and the trust of major clients. Our team is always ready to support you every step of the way from manufacturing to installation and beyond.



We are happy to
communicate
with you

Saudi Arabia Riyadh
Al Malaz District, University Street
Plan Building

crmadmin@zamilco.com

www.zamilco.com

2024